

Spirent TestCenter™

LISP Emulation

Locator/Identifier Separation Protocol (LISP) disassociates two elements, the routing locator and the identifier that have traditionally been incorporated into one number space: the IP address. LISP uses a network-based map-and-encapsulate scheme (RFC 1955) to separate the identity and location functions. An identifier and a locator can be an IP address or an arbitrary element such as a set of GPS coordinates or a MAC address.

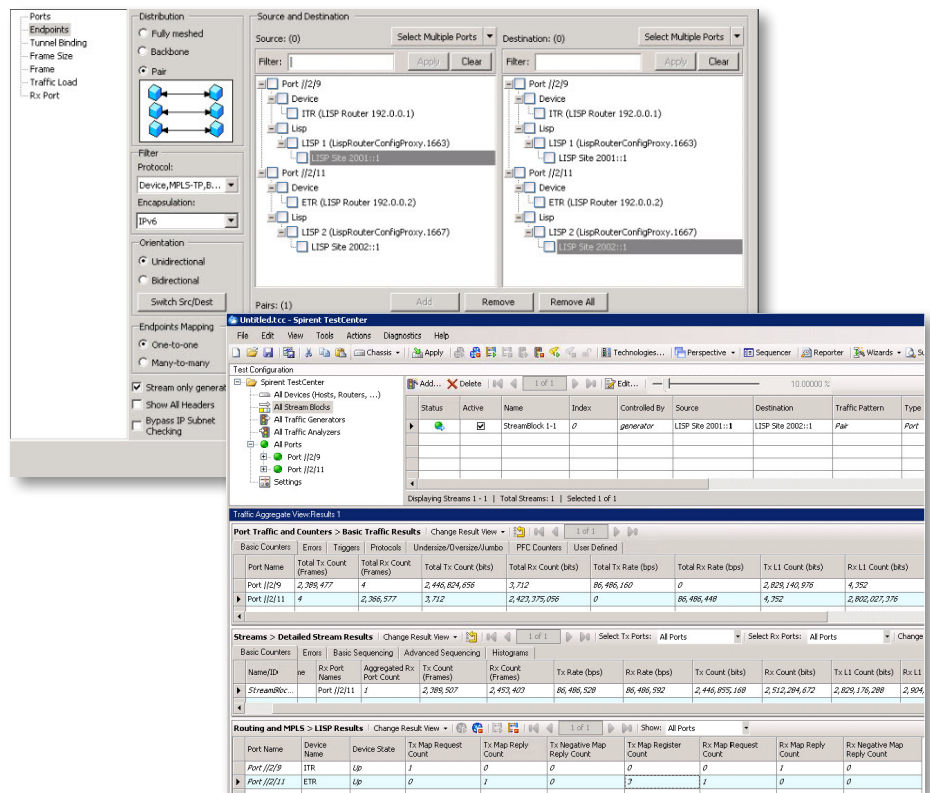
Features

- Supported on all Spirent TestCenter modules. Spirent TestCenter device's roles can be both ETR and IGR, or either
- Setting up LISP site(s) is as easy as setting up a network block
- Run traffic and control plane; Bound Stream Blocks makes testing simple
- Real-time changes with Spirent TestCenter; Dynamic change exercises LISP in DUT
- Multiple block support
- Management and change of prefix length, address increment, negative mapping request will be dropped, etc.
- Static locator configurations
- Both IPv4 and IPv6 locator address family supported

Spirent's LISP emulation allows you to create complex tests to validate LISP implementations by simplifying multihomed routing and supporting datacenter virtual machine mobility.

Applications of Spirent's LISP Emulation Testing Tools Includes:

- Testing Converged Fabrics—test end-to-end FCoE to FC performance emulating virtual machine initiators on Ethernet and storage array targets on native Fiber Channel test ports
- Testing High-Speed Ethernet FCoE Fiber Channel Forwarder (FCF) switches—test Enode and VN_port control plane scale and combined LAN/SAN queueput
- Testing FIP Snooping and N-Port Virtualization (NPV) bridge switches—test top of rack switch FCoE pass-through capabilities by emulating server VN_ports as well as fabric FCF VF ports



About Spirent Communications

Spirent Communications (LSE: SPT) is a global leader with deep expertise and decades of experience in testing, assurance, analytics and security, serving developers, service providers, and enterprise networks.

We help bring clarity to increasingly complex technological and business challenges.

Spirent's customers have made a promise to their customers to deliver superior performance. Spirent assures that those promises are fulfilled.

For more information, visit:
www.spirent.com

Technical Specifications

LISP Emulation

- Full Link Layer Discovery Protocol (LLDP) emulation
- Auto-negotiation of 802.1Qbb Priority Flow Control (PFC) and 802.1Qaz Enhanced Transmission Selection (ETS)
- LLDP & DCBX port summary results with exchanged priority map
- Detailed DCBX feature results with 25+ metrics including PFC, FCoE Priority and Bandwidth allocation
- 20+ LLDP and DCBX TLVs with default or configurable parameters
- Customizable TLVs
- Push or pull link configuration options thru DCBX TLV willingness settings
- Bring logical link up and down
- Automatic start and stop with FCoE emulation
- Configurable Tx interval, multiplier and delays

Supported Platforms

- Supported on the Spirent MX, MX2, FX, FX2, DX and DX2 Family modules
- Supported on Spirent TestCenter Virtual
- Supported on Spirent TestCenter C1 and C50

Ordering Information

| Description | Part Number |
|-------------------------------|-------------|
| LISP Emulation | BPK-1181A |
| Related Items | |
| VXLAN Emulation | BPK-1310A |
| EVPN Emulation | BPK-1311A |
| FCoE/DCBX Emulation | BPK-1081A |
| OpenFlow Controller Emulation | BPK-1193A |
| OpenFlow Switch Emulation | BPK-1195A |
| SPB Emulation | BPK-1182A |
| TRILL Emulation | BPK-1187A |



Contact Us

For more information, call your Spirent sales representative or visit us on the web at www.spirent.com/ContactSpirent

www.spirent.com

© 2018 Spirent Communications, Inc. All of the company names and/or brand names and/or product names and/or logos referred to in this document, in particular the name "Spirent" and its logo device, are either registered trademarks or trademarks pending registration in accordance with relevant national laws. All rights reserved. Specifications subject to change without notice.

Americas 1-800-SPIRENT
+1-800-774-7368 | sales@spirent.com

US Government & Defense
info@spirentfederal.com | spirentfederal.com

Europe and the Middle East
+44 (0) 1293 767979 | emeainfo@spirent.com

Asia and the Pacific
+86-10-8518-2539 | salesasia@spirent.com