

Spirent **Avalanche**

SIPNG

Application and Security Testing Solutions

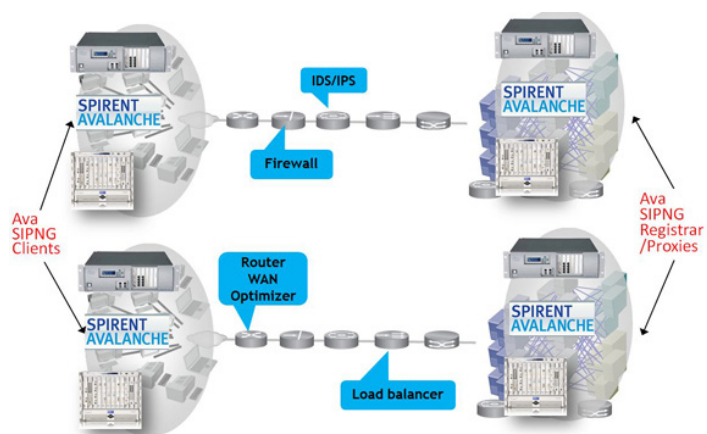
Avalanche SIPNG combined with Avalanche Layer 4-7 application test solution provides realistic multi-play traffic simulation targeted specifically at testing load balancers, WAN acceleration engine, caching proxy, DPI, and firewall for assessing Quality of Service (QoS) of VoIP services.

Applications

- Testing SIP enhanced network services for scalability and response-time behavior under load
- Testing SIP enhanced network services for high performance, user and network realism
- Ensure voice toll grade quality (QoS) of VoIP infrastructure before turning VoIP service live
- SIP application traffic simulation between UAC–UAS;
Client to Client or Client to SIP Proxy/Registrar
- Voice quality assessment in presence of multi-play traffic

Features & Benefits

- **SIPNG Client and Proxy/Registrar Emulations:** This feature allows simulation of standard SIP Registration and SIP initiate phone calls. The SIP messages are sent over standard TCP or UPD ports simulating real work SIP traffic at high capacity and performance. Statistics keeps accurate logs of all SIP session and connections in real-time providing valuable qualitative assessment of IP network capacity to handle real-time VoIP services.
- **SIPNG Phonebook:** New phonebook configuration allows user to easily enter range values for SIP caller/callee URI to create thousands of SIP UE's quickly reducing configuration time.
- **Media Codecs and Speech Payload:** Supports standard G.711 A/μ-law, G.729, G.726, G.723, and G.728 speech encoded audio samples. Media payload in RTP streams can be customized with random data allowing more flexibility controlling media size.
- **Custom SIP Headers:** This feature allows for adding customized standard SIP headers. Adding customized SIP headers allow testing firewalls and DPI, and certain SIP applications that require certain values and parameters to be present in SIP messages in order to conform to security policies.
- **SIP Call Timers, Message Parameters, and Syntax Formats Manipulation:** This feature allow user to configure parameters such as T1, T2, Registration expires, Registration on/off, syntax long/short form, Max-Forward header, and SIP and RTP ports to cover more SIP test cases.
- **Voice Quality Analysis (VQA):** Connection rate, number of sessions, and SIP delay metrics do not tell the whole story about “voice” quality. The VQA module based on P.564 provides “voice” quality metrics such as MOS, R-Factor, jitter, packet loss, packet delay and other “voice” and network transport metrics to further provide an accurate analytical analysis of the IP network ability to provide high QoS VoIP services.



About Spirent Communications

Spirent Communications (LSE: SPT) is a global leader with deep expertise and decades of experience in testing, assurance, analytics and security, serving developers, service providers, and enterprise networks.

We help bring clarity to increasingly complex technological and business challenges.

Spirent's customers have made a promise to their customers to deliver superior performance. Spirent assures that those promises are fulfilled.

For more information, visit: www.spirent.com

AMERICAS 1-800-SPIRENT
+1-800-774-7368
sales@spirent.com

US Government & Defense
info@spirentfederal.com
spirentfederal.com

EUROPE AND THE MIDDLE EAST
+44 (0) 1293 767979
emeainfo@spirent.com

ASIA AND THE PACIFIC
+86-10-8518-2539
salesasia@spirent.com

Technical Specifications

- Ports per module
- Connector type
- Signal rate
- Variable fields per stream
- Minimum frame size
- Maximum frame size
- Maximum transmit streams
- Maximum receive streams
- Loop Line Timing
- Measurement Timestamp Resolution
- Link Fault Signaling

Supported Modules & Platforms

- Supports all Avalanche Virtual appliances: Spirent C1, C100-S3, CF20 and Avalanche Virtual
- Supports all Avalanche compatible Spirent mX2 modules

Ordering Information

Description	Part Number
Avalanche Commander SIP Client Server for CF20	CMP-ASW-SIP-CF20
Avalanche Commander SIP Client Server for C100	CMP-ASW-SIP
Avalanche Commander SIP Client Server for Compatible Spirent TestCenter Modules (full chassis)	BPK-1206A
Avalanche Commander SIP Client Server for Compatible Spirent TestCenter Modules (2 Modules)	BPK-1206A-2XMOD

Available in license bundles for C1 and Avalanche Virtual.