

# Spirent **Avalanche**

## Applications and Security Testing Solutions

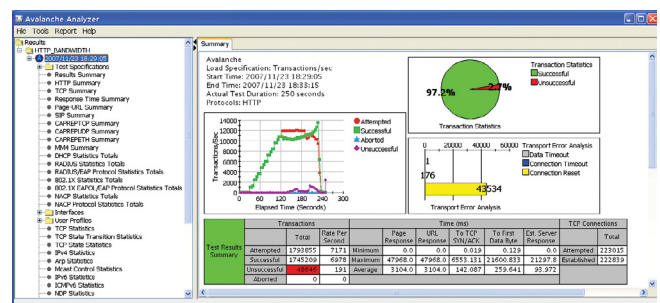
Spirent's Avalanche Layer 4-7 testing solution provides capacity, security and performance testing for network infrastructures, cloud and virtual environments, Web application infrastructures and media services that ensures Quality of Service (QoS) and Quality of Experience (QoE) for your customers. Avalanche pinpoints network capacity with the highest performing Layer 4-7 traffic generation capability available from 1Gbps to 100Gbps.

### Application

- Network Performance Testing
- Web Application Testing
- Advanced high capacity HTTPS cryptographic load testing
- Media Testing
- Security Testing
- Cloud and Virtual Network Testing

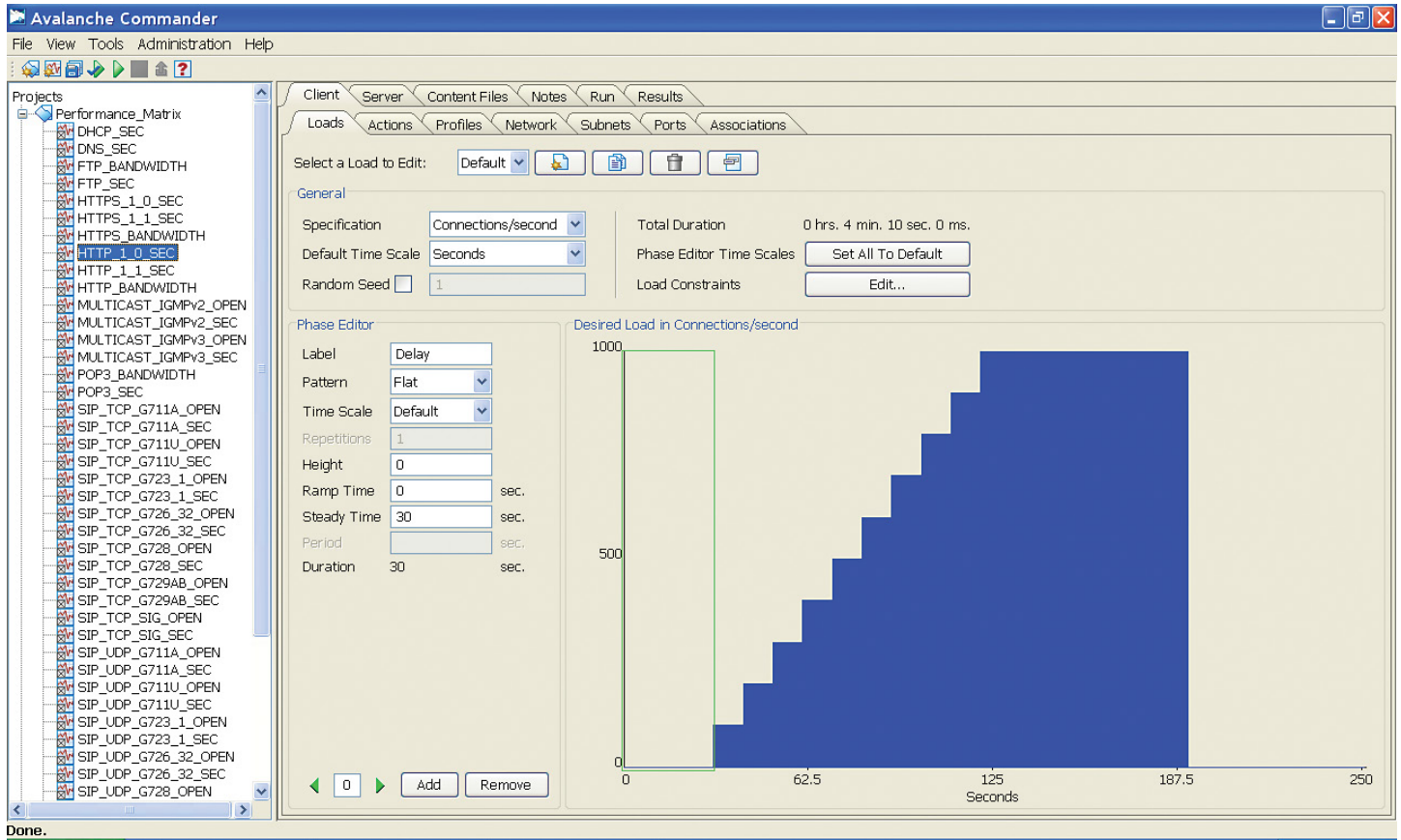
### Features & Benefits

- **Up to 100Gbps of Stateful Traffic Generation**—Spirent Avalanche provides the capability to generate stateful traffic from 1Gbps to 100Gbps rates via native interfaces for scale and performance testing for the most demanding of environments. Multiple systems can be used in a single test creating vast amounts of application and security traffic.
- **Flexible Load Profile**—Spirent Avalanche's flexible load profile offers testers the flexibility to specify load variables such as connections per second, concurrent connections, transactions per second, new user sessions per second and concurrent users.
- **Real-Time Statistics**—Spirent Avalanche offers real-time statistics across all protocols and reporting tool that makes analyzing results faster and easier.
- **Network Devices Performance Testing**—Spirent Avalanche provides performance and capacity testing on a variety of network devices including: Firewall, Virtual Devices, Application Firewall, Load Balancer, Cache, Proxy, URL Filter, Content Filter, Anti-Virus, Anti-Spyware, Reverse-Proxy, SSL Accelerator, HTTP/HTTPS Accelerator, SMTP Relay, IDS/IPS, and more, and IPSec VPN Gateways.
- **Application Server Performance Testing**—Spirent Avalanche can validate performance of several types of real servers including: Web Server, Application Server, Mail Server, DHCP Services, FTP Server, DNS Server, Telnet Server, RTSP/RTP QuickTime Streaming Server, Multicast Server, HTTP Adaptive Bitrate Streaming, and more.
- **Media Testing**—Spirent Avalanche can perform media testing and service verification from the user's point of view with realistic voice calling, HTTP Adaptive Bitrate streaming, unicast and multicast streaming video, and simulate Internet data traffic using static IP address or IP address assign by DHCP over PPPoE, VLAN and Stacked VLANs (e.g., Q-in-Q).
- **Web Application Testing**—Spirent Avalanche can perform Web application testing including: Web services, ERP and CRM applications with Spirent Avalanche's application testing capability to support cookie, session ID, dynamic link, automatic follow redirect, additional header, content validation, SOAP message, think time, variable think time and variable assignment.
- **Network Security Testing**—Spirent Avalanche provides extensive testing for secure network communication, vulnerability assessment, attack generation, and user authentication including: IPSec, HTTPS/TLS (including TLSv1.3), 802.1x, Network Access Control (NAC), RADIUS and custom user imported traffic over TLS.
- **Avalanche Virtual**—is a software solution based on the industry-leading Spirent Avalanche platform that tests and stresses virtualized data center environments. It offers both Enterprise and Cloud Service Providers an unparalleled opportunity to correlate the impact of large-scale cloud-based application deployments by creating real-world user emulation and traffic generation directly in the cloud.



Avalanche Analyzer

Feature	Spirent Avalanche			Spirent TestCenter™	
	Spirent C1 Portable Appliance	Spirent CF20 Appliance	Spirent C100-S3 Appliance	Spirent MX2 (10G)	Spirent MX2 (1G)
	Per appliance	Per appliance	Per appliance	Per module	Per module
Number of Test Users	1 Test User	Up to 2 users (10G /1G configurations)	Up to 4 users (10G /1G configurations)	Up to 2 Test Users	Up to 2 Test Users
Type of Simulation	Client and Server	Client and Server	Client and Server	Client and Server	Client and Server
Network Interface Options	<ul style="list-style-type: none"> <li>• 4x 10/100/1000 Copper</li> <li>• 2x10GbE SPF+</li> </ul>	<ul style="list-style-type: none"> <li>• 8x10G/8x1G SFP+</li> <li>• 2xQSFP28 10/40/100G Multispeed</li> <li>• 4xQSFP28 (2 users maximum)</li> <li>• Cryptographic Accelerator - Built-in</li> </ul>	<ul style="list-style-type: none"> <li>• 16x 10/100/1000 Copper or Fiber</li> <li>• 16x 10/100/1000 Copper or Fiber and 4x 10GbE</li> <li>• 8x10 GbE SPF+</li> <li>• 4x QSFP28 10/25/40/50/100 Multispeed</li> <li>• Cryptographic Accelerator Option</li> </ul>	<ul style="list-style-type: none"> <li>• MX2-10G-S4 Spirent MX2 4-PORT 10G/1G SFP+ Module</li> <li>• MX2-10G-S8 Spirent MX2 8-PORT 10G/1G SFP+ Module</li> <li>• MX2-10G-S12 Spirent MX2 12-PORT (8-PORT support) 10G/1G SFP+ Module</li> </ul>	<ul style="list-style-type: none"> <li>• MX2-1G-S8 Spirent MX2 8-port 1G Only SFP+ Module</li> <li>• MX2-1G-S12 Spirent MX2 12-port 1G Only SFP+ Module</li> <li>• MX2-1G-S16 Spirent MX2 16-port* 1G Only SFP+ Module (*12 port support)</li> </ul>
Avalanche Virtual	Avalanche is available for use in virtual instances for ESXi and KVM environments and scales from 1 to multi-10GB performance				
Network Access Protocol	DHCP, PPPoE, PPTP, and IPSec (IKEv1 and IKEv2)				
Network Realism	Line speed limitation, network latency, packet loss and fragmentation				
IP Version Supported	IPv4 and IPv6 (including DSLITE)				
Encapsulation Protocol	802.1Q and 802.1 Q-in-Q				
Transport	TCP, UDP, SSLv2, SSLv3, TLS v1.0, TLS v1.2, TLS v1.3, QUIC				
Data Protocol	HTTP, HTTPS, FTP (Active/Passive), DNS, TELNET, SMTP, POP3, IMAP4, EMAIL over SSL, RADIUS, MM4, ICMP, CIFS and Capture/Replay				
Extended Protocols	BitTorrent, Gnutella, MSN, Yahoo, SKYPE, SQL, MYSQL, Oracle, SMB, NFS, Remote Desktop, Exchange, LDAP				
Authentication	802.1x, Network Access Control (NAC), Radius				
Voice Protocol	SIP over TCP/UDP				
Voice Codec Supported	G.711A, G.711U, G.723.1, G.726-32, G.728 and G.729AB				
Voice Quality Measurement	MOS score based on R-factor CIFS and NFS				
File Access Protocol	CIFS and NFS				
Video Protocol	HTTP Adaptive bit rate streaming for Apple, Adobe, Microsoft and DASH, ABR over SSL, Unicast Streaming Quicktime RTSP/RTP, Unicast Streaming Real Network RTSP/RTP, Unicast Streaming Microsoft MMS, Multicast Streaming IGMPv2, IGMPv3 and MLDv2, and Flash Media Streaming using RTMP/RTMPT				
Video Codec Supported	MPEG-1, H.261, MPEG-2. H.262, MPEG-4. H.264				
Video Quality Measurement	MDI measurements along with additional stats to detect picture quality				
Attack Generation	L2/L4 DDoS Attacks and L4/L7 Application Attacks				
Reporting	Integrated CSV test results analyzer fully customizable with report generation in PDF and HTML; also provides over 300 statistics per IP address				
Automation	GUI to TCL				



## NetSecOPEN Testing

Standards-based realistic mixed traffic testing is available for Avalanche.

NetSecOPEN is a network security industry group where network security vendors, tool vendors, labs and enterprises collaborate to create open and transparent testing standards. The goal of this group is to create a suite of standards that can be used for the evaluation and/or certification of network security products. The NetSecOPEN standard tests in Avalanche provides an easy-to-use template for testing modern network security infrastructures. For more information on NetSecOPEN, go to [www.netsecopen.org](http://www.netsecopen.org).



### About Spirent Communications

Spirent Communications (LSE: SPT) is a global leader with deep expertise and decades of experience in testing, assurance, analytics and security, serving developers, service providers, and enterprise networks.

We help bring clarity to increasingly complex technological and business challenges.

Spirent's customers have made a promise to their customers to deliver superior performance. Spirent assures that those promises are fulfilled.

For more information, visit: [www.spirent.com](http://www.spirent.com)

AMERICAS 1-800-SPIRENT  
+1-800-774-7368  
[sales@spirent.com](mailto:sales@spirent.com)

US Government & Defense  
[info@spirentfederal.com](mailto:info@spirentfederal.com)  
[spirentfederal.com](http://spirentfederal.com)

EUROPE AND THE MIDDLE EAST  
+44 (0) 1293 767979  
[emeainfo@spirent.com](mailto:emeainfo@spirent.com)

ASIA AND THE PACIFIC  
+86-10-8518-2539  
[salesasia@spirent.com](mailto:salesasia@spirent.com)

### Spirent Professional Services

#### Professional Services

- **Test lab optimization:** Test automation engineering services
- **Service deployment and service-level optimization:** Vendor acceptance testing, SLA benchmarking, infrastructure and security validation
- **Device scalability optimization:** POC high scalability validation testing

#### Education Services

- **Web-based training:** 24/7 hardware and software training
- **Instructor-led training:** Hands-on methodology and product training
- **Certifications:** SCPA and SCPE

#### Implementation Services

- Optimized new customer productivity with up to three days of on-site assistance

### Ordering Information

Description	Part Number
Avalanche ABR Video Streaming Client Server	CMP-ASW-ABR
Avalanche Application Testing Client Sever	CMP-ASW-APP
Avalanche CIFS Client Server	CMP-ASW-CIFS
Avalanche DHCP Client Server	CMP-ASW-DHCP
Avalanche DS-LITE Client Server	CMP-ASW-DSLITE
Avalanche Email Over SSL-SMTP, POP3, IMAP	CMP-ASW-EMAIL-SSL
Avalanche GTP SGSN-GGSN	CMP-ASW-GTP
Avalanche HTTP 2 Protocol Support	CMP-ASW-HTTP2
Avalanche IPSEC Client	CMP-ASW-IPSEC
Avalanche IPV6 Client Server	CMP-ASW-IPV6
Avalanche SMTP POP3 IMAP4 Client Server	CMP-ASW-MAIL
Avalanche Multimedia Messaging SVC MM4 Client SVR	CMP-ASW-MM4
Avalanche 802.1X NAC	CMP-ASW-NAC
Avalanche NFS Client	CMP-ASW-NFS
Avalanche PPTP Protocol Pilot Packet	CMP-ASW-PILOT
Avalanche PPP Over Ethernet Client Server	CMP-ASW-PPP
Avalanche PPTP Protocol	CMP-ASW-PPTP
Avalanche QUIC Protocol	CMP-ASW-QUIC
Avalanche Radius Client	CMP-ASW-RAD
Avalanche RTMP Client	CMP-ASW-RTMP
Avalanche SAPEE Protocol Emulation Environment	CMP-ASW-SAPEE
Avalanche SIP Client Server	CMP-ASW-SIP
Avalanche SSL Client Server	CMP-ASW-SSL
Avalanche Video Streaming Unicast	CMP-ASW-UNICAST
Avalanche Vulnerability Assessment	CMP-ASW-VAD
Avalanche Video on Demand Multicast Client Server	CMP-ASW-VOD

Contact Spirent Sales representative for more detailed information.