



## Spirent TestCenter™

# SPIRENT DEVICE COMMANDER

Spirent Device Commander reduces test development time and costs by providing a fully integrated lab device configuration capability within Spirent TestCenter.

### FEATURES & BENEFITS

- With the Capture/Replay Device Configuration, The user can capture a device configuration suitable for the test to be executed. The configuration can then be played back as part of the test case execution in the Command Sequencer, reducing the need to hand code device configurations. Test case developer productivity is improved as configurations no longer need to be laboriously hand coded and debugged. Device configuration is quick, easy and painless.
- Parameterize Configurations allow users to choose to parameterize a configuration and pass that information into the session at run. Productivity is improved because device configurations can be leveraged across different lab devices without the need to regenerate the configuration from scratch.
- With the Edit Configurations feature, a user can capture all or part of a device configuration. Configurations can be flexibly edited and shared among many users, enabling quick learning and re-use. Productivity improves because users leverage existing configurations and change just the parts needed to complete their test case.

SNMP, SSH and Telnet Support – SSH and Telnet are the mostly widely used methods of connecting to network devices. Spirent Device Commander natively recognizes and supports SSH and Telnet sessions. In addition, for devices that support SNMP, Spirent Device Commander can SET and GET SNMP attributes as well as receive and act on SNMP TRAPS. This supports all widely used protocols and enables productivity gains to be leveraged over nearly all devices in the lab

### SUPPORTED MODULES & PLATFORMS

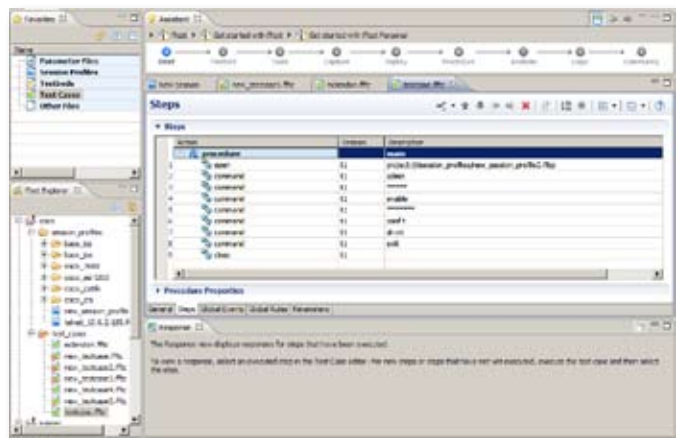
- Windows® XP operating system

Spirent Device Commander enables users to capture lab device configurations and replay them from the Spirent TestCenter Commander Sequencer or a script at a later time. The device configurations are fully documented and editable and can be parameterized to enable re-targeting of configurations to devices, e.g. at a different IP address.

Spirent Device Commander configurations can be shared among developers, improving team communication and test plan coherence. Spirent TestCenter GUI to script works flawlessly with Spirent Device Commander, marrying the superlative analysis capabilities of Spirent TestCenter with the ability to quickly and effortlessly replay device configuration commands as a test step in the Spirent TestCenter Command Sequencer. The seamless integration of the Spirent TestCenter Command Sequencer and the Spirent Device Commander enables test case developers to fully automate all of the devices used in a test case without writing a single line of code.

### APPLICATIONS

Automation labs where test development occurs.



**Spirent TestCenter™**  
**SPIRENT DEVICE COMMANDER**

**REQUIREMENTS**

- Pentium® or greater PC running Windows® XP Professional SP2 with mouse/color monitor required for GUI operation
- 3GHz Pentium 4 or equivalent with 2GB of RAM
- 15GB of free disk space
- One Ethernet cable and one 10/100/1000 Mbps Ethernet card installed in the PC
- Operating system languages supported: English, French, German, Italian, Japanese, Korean and Chinese (traditional and simplified)

**Ordering Information**

Product	Part Number
Spirent Device Commander (includes first year support)	VPK-0007

**SPIRENT SERVICES**

- Instructor-led training: Hands-on methodology and product training
- SVC-1010SDC - 1st year included
- SVC-1010SDC - 2 year + 20% SW list, 1st year included for free
- SVC-1010SDC - 3 year + 35% SW list, 1st year included for free
- SVC-1010SDC - If LAPSED, add 25% SW list



Spirent Communications  
1325 Borregas Avenue  
Sunnyvale, CA 94089 USA

**SALES AND INFORMATION**  
sales@spirent.com  
www.spirent.com

**Americas**  
T: +1 800.SPIRENT  
+818 676.2683

**Europe, Middle East, Africa**  
T: +33 1 6137.2250

**Asia Pacific**  
T: +852 2511.3822