

SPIRENT AVALANCHE

SIPNG

Avalanche SIPNG combined with Avalanche L4-7 application test solution provides realistic multi-play traffic simulation targeted specifically at testing load balancers, WAN acceleration engine, caching proxy, DPI, and firewall for assessing Quality of Service (QoS) of VoIP services.

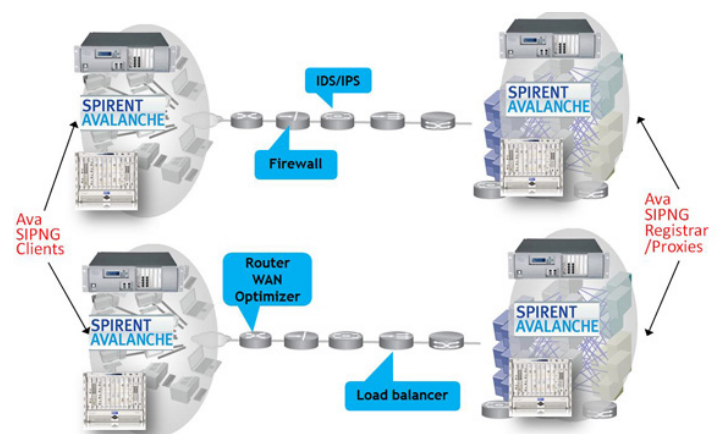
APPLICATIONS

- Testing SIP enhanced network services for scalability and response-time behavior under load
- Testing SIP enhanced network services for high performance, user and network realism
- Ensure voice toll grade quality (QoS) of VoIP infrastructure before turning VoIP service live
- SIP application traffic simulation between UAC—UAS; Client to Client or Client to SIP Proxy/Registrar
- Voice quality assessment in presence of multi-play traffic

FEATURES & BENEFITS

- **SIPNG Client and Proxy/Registrar Emulations**—this feature allows simulation of standard SIP Registration and SIP initiate phone calls. The SIP messages are sent over standard TCP or UDP ports simulating real work SIP traffic at high capacity and performance. Statistics keeps accurate logs of all SIP session and connections in real-time providing valuable qualitative assessment of IP network capacity to handle real time VoIP services.
- **SIPNG Phonebook**—new phonebook configuration allows user to easily enter range values for SIP caller/callee URI to create thousands of SIP UE's quickly reducing configuration time.
- **Media Codecs and Speech Payload**—supports standard G.711 A/ μ -law, G.729, G.726, G.723, and G.728 speech encoded audio samples. Media payload in RTP streams can be customized with random data allowing more flexibility controlling media size.

- **Custom SIP Headers**—this feature allows for adding customized standard SIP headers. Adding customized SIP headers allow testing firewalls and DPI, and certain SIP applications that require certain values and parameters to be present in SIP messages in order to conform to security policies.
- **SIP Call Timers, Message Parameters, and Syntax Formats Manipulation**—this feature allow user to configure parameters such as T1, T2, Registration expires, Registration on/off, syntax long/short form, Max-Forward header, and SIP and RTP ports to cover more SIP test cases.
- **Voice Quality Analysis (VQA)**—connection rate, number of sessions, and SIP delay metrics do not tell the whole story about “voice” quality. The VQA module based on P.564 provides “voice” quality metrics such as MOS, R-Factor, jitter, packet loss, packet delay and other “voice” and network transport metrics to further provide an accurate analytical analysis of the IP network ability to provide high QoS VoIP services.



SPIRENT AVALANCHE SIPNG

TECHNICAL SPECIFICATIONS

- Ports per module
- Connector type
- Signal rate
- Variable fields per stream
- Minimum frame size
- Maximum frame size
- Maximum transmit streams
- Maximum receive streams
- Loop Line Timing
- Measurement Timestamp Resolution
- Link Fault Signaling

SUPPORTED MODULES & PLATFORMS

- Supports all Avalanche appliances: 290, 2900, 3100
- Supports all Spirent TestCenter HyperMetrics CM, AP, mX modules

REQUIREMENTS

An IBM® compatible PC must meet the following minimum requirements to run the Spirent Avalanche:

- One 10/100/1000Base-T unshielded twisted pair (UTP) cable
- One 10 Mbps or 10/100/1000 Mbps Ethernet NIC card
- Intel® E6300 Core 2 Duo 4 (or equivalent)
- One serial port
- Minimum of 2GB of RAM
- Minimum 10 GB free space on the hard drive
- Windows® XP operating system, Service Pack 2 (SP2)
- An SVGA color monitor (or equivalent) and a mouse
- Microsoft Terminal Services™ or HyperTerminal™, or equivalent communications software package
- CD-ROM drive

ORDERING INFORMATION

DESCRIPTION	PART NUMBER
AVALANCHE SIP CLIENT/SERVER	CEE-SW-SIP
AVALANCHE PORTABLE SIP CLIENT/SERVER	CEE-SW-SIP-PT
AVALANCHE VQA MULTIMEDIA SW BUNDLE	CEE-SWB-011
AVALANCHE TRIPLE PLAY PROTOCOL SW BUNDLE	CEE-SWB-020
AVALANCHE EXTREME 2010 SW BUNDLE	CEE-SWB-030
AVALANCHE TRIPLE PLAY PROTOCOL TEST SOLUTION	SPK-1071
AVALANCHE EXTREME 2010 TEST SOLUTION	SPK-1099
AVALANCHE TRIPLE PLAY PROTOCOL TEST SOLUTION 2PK MODULE	SPK-1071-2XMOD
AVALANCHE EXTREME 2010 TEST SOLUTION 2PK MODULE	SPK-1099-2XMOD
AVALANCHE VQA MULTIMEDIA SRVR/CLIENT TEST SOLUTION	SPK-1043
AVALANCHE VQA MULTIMEDIA SRVR/CLIENT TEST SOLUTION - 2PK MODULE	SPK-1043-2XMOD
AVALANCHE EXTREME VER-3 TEST SOLUTION	SPK-1044
AVALANCHE EXTREME VER-3 TEST SOLUTION 2PK MODULE	SPK-1044-2XMOD
AVALANCHE VOICE OVER IP SIP BASE PKG A	BPK-1206A
AVALANCHE VOICE OVER IP SIP BASE PKG A 2PK MODULE	BPK-1206A-2XMOD

AMERICAS 1-800-SPIRENT • +1-818-676-2683 • sales@spirent.com

EUROPE AND THE MIDDLE EAST +44 (0) 1293 767979 • emeainfo@spirent.com

ASIA AND THE PACIFIC +86-10-8518-2539 • salesasia@spirent.com

© 2011 Spirent Communications, Inc. All of the company names and/or brand names and/or product names referred to in this document, in particular the name "Spirent" and its logo device, are either registered trademarks or trademarks pending registration in accordance with relevant national laws. All rights reserved. Specifications subject to change without notice. Rev. A 08/11

