

Four Reasons to buy iTest Team Server

1. Drive Predictability and Make Real-Time Decisions

iTest Team Server provides the information needed to make informed, real-time decisions on test coverage, automation progress, test execution schedules, manual test results, and more—in turn helping project teams to deliver on time and on budget, to ensure that projects meet all requirements.

Project managers and test leads can be ready for team meetings in minutes—instead of hours, saving everyone the effort of having to manually communicate status, and answers questions posed by external stakeholders and upper management—on-the-fly.

2. Include Manual Testing Results During Decisions

iTest Team Server includes results from interactive, collaborative, and self-documenting manual tests as part of the overall data for more informed and accurate decision making.

3. Use Familiar Tools

iTest Team Server helps reduce adoption costs by integrating with the applications that people already know and use. Team members continue to use the tools that are most productive and do not have to learn another layer of tools.

4. Get Summary and Detailed Visibility

By bringing all test artifacts, data, and status together in one place, iTest Team Server enables more effective team communication and collaboration while providing both summary and detailed visibility into the QA environment. Drill-down reporting makes it easy to identify failure areas, drastically reducing the bug fix cycle.



Americas

1-800-SPIRENT
+1-818-676-2683
sales@spirent.com

Europe and the Middle East

+44 (0) 1293 767979
emeainfo@spirent.com

Asia and the Pacific

+86-10-8518-2539
salesasia@spirent.com



SPIRENT

BRINGING VISIBILITY AND INSIGHT TO TEST LEADERS

iTest Team Server

SPIRENT iTest Team Server

BRINGING VISIBILITY AND INSIGHT TO TEST LEADERS

Today's test organizations spend the greater part of their work day involved in collaborative tasks. They share information, they work together in teams, and they manage projects. It can be a challenge to collaborate effectively if you do not have tools to easily communicate, share information and coordinate project details and deadlines among a large group of people.

Spirent iTest Team Server (ITS) can help you get your testing done more efficiently because it provides organizations with a platform for sharing information and working together in teams. ITS gathers, systematizes, and graphically displays analytic test data from multiple sources. This promotes confident and informed decisions—while giving test leaders commanding visibility into test coverage, group progress, project risk analysis, and product release readiness. Executives, managers, and test leaders can view top-level rolled-up summaries or drill all the way down to individual test reports.

The “one touch” test documentation capability fosters rigorous test plan documentation and seamless asset sharing between testing groups. Because a Spirent ITS test plan is a precise “as tested” document that lists the verbatim commands and DUT responses, it can be followed exactly by any other tester or by a developer seeking to reproduce an issue.

Highlights

The collaboration platform is at the heart of Spirent's test automation solution.

The integrated processes, tools, and project artifacts that make up ITS optimize the process of authoring and performing tests in teams. ITS is both a collection of features shared by the members of a project team that enables them to collaborate and work together more effectively and a platform specifically architected for integration and extensibility.

Complementary



ITS is a new, server-based, software-only companion to iTest. It forms a natural extension to the iTest platform by harvesting existing iTest data for detailed analysis, enabling test leaders to make more informed release-based decisions. It also offers a more seamless experience for scheduling and executing tests authored with iTest.

Collaborative



ITS enables teams to work more effectively, by sharing and monitoring test assets, test results, progress assessments, and automation progress—all done very easily and naturally. This enables faster defect resolution and a quicker more detailed root-cause identification.

Customizable



From the very beginning, ITS has been specifically architected for integration and extensibility. Not only can you customize elements to suit your environment and project needs—but partners and other vendors can also customize elements of ITS and complement it with new functionality to match organization's testing workflow.

ITS COMPONENTS

Dashboards—Decision-Making Tools for Leader

ITS provides in-depth visibility into the QA environment with the **Web-based Dashboard** and **Test Reporting** modules. Make informed decisions about group and activity progress, release readiness, and test coverage using:

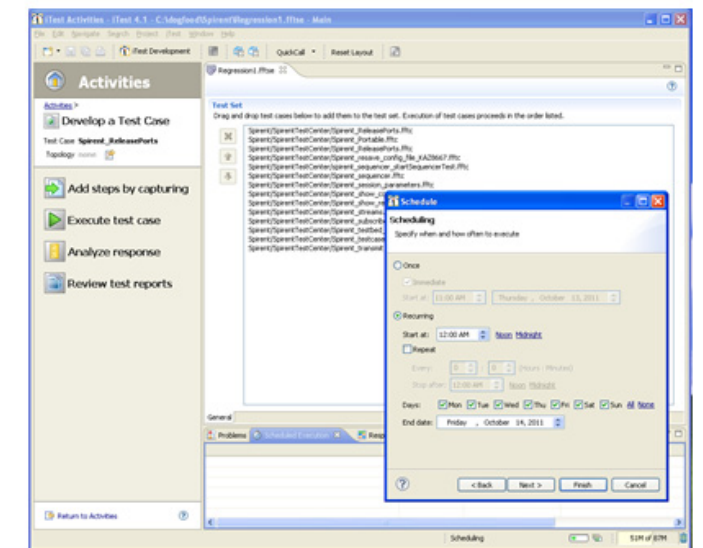
- **Authoring Reports** that track test development activity across teams
- **Execution Reports** that track test execution activity and failures
- **Quality Metrics** that track test results and automation progress.



Scheduling—Expose Test Execution Cycles on Dashboard

ITS enables “lights out” regression testing with the **Test Suite Management** and **Scheduling & Execution** modules—a real-time window on the progress of individual test runs or the overall test execution cycle.

- Track, schedule, and execute tests on physical and virtual lab assets
- Distribute execution of tests across resources in the lab
- Schedule execution of tests directly from within the iTest GUI

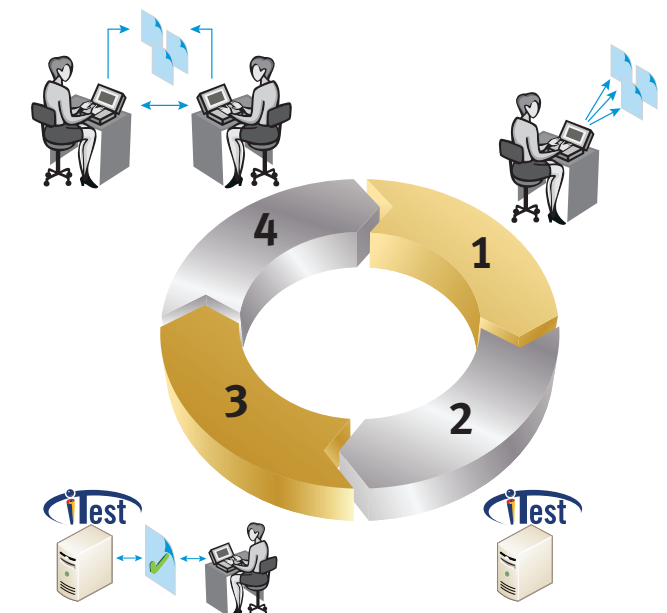


Collaborative Manual Testing—Include Manual Testing Results in Decisions

ITS automates the documentation and journaling of manual test activities and test results. The results of all manual tests performed by your entire team are fully documented, logged and integrated into the system. This generates annotated and consolidated reports for the entire team which can be reused by future testers or developers attempting to debug software. It also enables live cross-team and interactive manual testing.

How it works: The 4 step process

1. No change to the manual testing process. Testers continue to use their favorite tool for testing.
2. All interactions with devices will be automatically captured and stored into a centralized repository.
3. Tester can interact with the server during test execution to add comments, make annotations, and mark pass/fail status.
4. Testers can interact with each other to perform cross-testing and interactive debugging.



Spirent iTest Resources

For more information on Spirent iTest products and solutions, including evaluation, partners, case studies, white papers and more, visit: <http://www.spirent.com/itest>.